



Welcome to
Wellesbourne
Reception



Welcome to Wellesbourne

Here you can see our main entrance next to the yellow duck, and the green door with 4 windows is our Reception door. This is where you will come into school each morning.



Meet your new teachers!



Miss Nesbit
REN Class teacher



Miss Rose
RSR Class teacher
Early Years Lead Teacher



Mrs Brown
Early Years Support Class teacher
(Monday-Tuesday)



Mrs Gilliland
Early Years Support Class teacher



Ms Peoples
Teaching Assistant REN
(Monday-Thursday)



Mrs Mannion
Higher Level Teaching
Assistant RSR



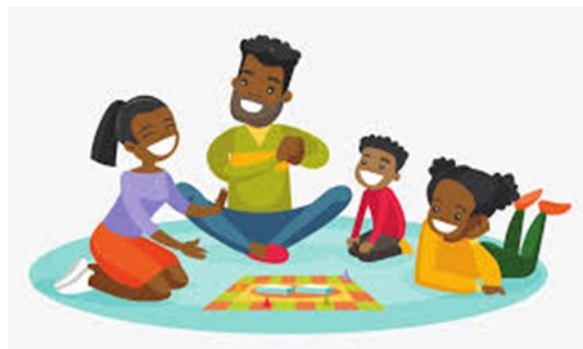
Miss Wise
Early Years Teaching Assistant
REN- Friday



REN

RSR

Here are your new classrooms! We will show you all of the lovely different areas where you can play and have lots of fun in.





We have a cosy reading area with lots of books, teddies and blankets.



These are our Story Bears, you will find them in the Book Area.



We have two wonderful Writing areas, one in each class.



We have a lovely changeable role play area. We could be astronauts, or visit a fruit and vegetable shop.



We have an interest table where you can always explore something new.



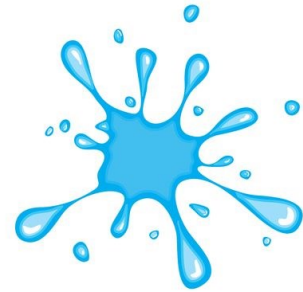
In each Classroom we have a teaching step and carpet gathering area to do lots of lovely learning.



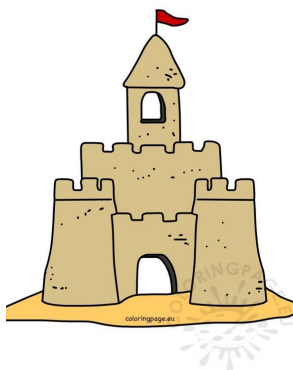
We have an Investigation Station where we can explore our interests further.



We have lots of things to build with, like wooden blocks and Lego. We have lots of animals and dolls house figures.



We have a sand and water area. Sometimes it will be sand play and other times it will be water play.





We have a comfy home corner where you can make a cup of tea with your friends, and a cosy corner with cushions, fairy lights and story books.





We have a funky fingers area, and a lovely play dough area so you can make cakes, monsters, or any creation you like.





We have a maths area, where you can explore numbers, shape, space and measure.



We have a lovely art and crafts area where you can paint at the easel or create a model using different materials.





We have a snack table in each classroom, you can help yourself to snack and water. We have the snack areas open twice a day, morning and afternoon.





We have a big outdoor space with lots to do. Here is our climbing frame.



We have a large garden and a mud kitchen where you can make recipes and potions.

We hope you enjoyed
looking at your new
classroom! We all look
forward to seeing you
soon!

