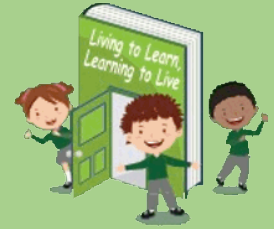




# Wellesbourne Primary and Nursery School

## Religious Education Curriculum Map



		Key Stage 1 (Exploring)	Lower Key Stage 2 (Connecting)	Upper Key Stage 2 (Connecting)
<b>AUTUMN</b>	<b>Believing</b> (Religious beliefs, teachings, sources; questions about meaning, purpose and truth)	Who is a Christian and what do they believe?  Who is a Muslim and what do they believe?  Who is Jewish and what do they believe?	What do different people believe about God?	Why do some people believe God exists?
		What can we learn from sacred books?	Why is the Bible so important for Christians today?	
			Why is Jesus inspiring to some people?	What would Jesus do?  Can we live by the values of Jesus in the twenty-first century?
				What do religions say to us when life gets hard?

<b>SPRING</b>	<b>Expressing</b> (Religious and spiritual forms of expression; questions about identity and diversity)	What places are special and why?	What makes some places sacred?	Why do people pray?
		How and why do we celebrate special and sacred times?	Why are festivals important to religious communities?  Why do some people think that life is a journey and what significant experiences mark this?	Is it better to express your beliefs in arts and architecture or in charity and generosity?
<b>SUMMER</b>	<b>Living</b> (Religious practices and ways of living; questions about values and commitments)	What does it mean to belong to a faith community?	What does it mean to be a Christian in Britain today?  What does it mean to be a Hindu in Britain today?	What does it mean to be a Muslim in Britain today?
		How should we care for others and the world, and why does it matter?	What can we learn from religions about deciding what is right and wrong?	What matters most to Christians and Humanists?
				What difference does it make to believe in ahimsa (harmlessness), grace, and/or Ummah (community)?